

## Wind Energy

One of the first companies to identify the potential of renewable energy in India, Apraava Energy entered this space by building its first wind farm in 2009. Since then Apraava has gradually grown its wind energy portfolio which is now spread across six states generating nearly 1000 MW and another 250 MW of committed capacity. The fleet comprises of turbines from four of the matured industry brands using their most proven models.

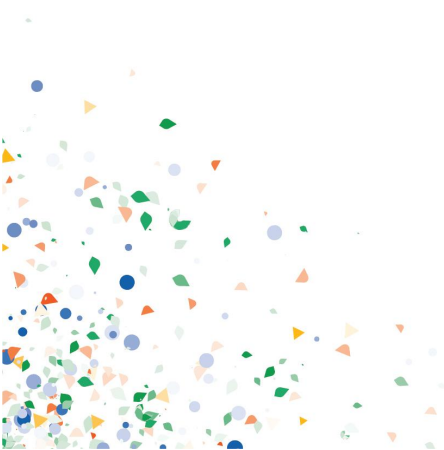
The organization has been resolutely pursuing a low-carbon business strategy for over a decade. Guided by this vision, Apraava Energy will continue its growth in this sector.

### List of Apraava Energy's Wind Power Projects

- **Khandke, Ahmednagar, Maharashtra**  
**Khandke Wind Farm: 50.4 MW | Commissioned in June 2009**

Khandke is the first renewable investment of the organization in India and is a 50.4 MW windfarm located in Maharashtra and has been in operation since June of 2009.

Site Name	State	Capacity	No. of Turbines	Customer	OEM	Date of Commissioning
Khandke	Maharashtra	50.4 MW	63	Maharashtra State Electricity Distribution Company Ltd.	Wind World India Ltd	Jun-09



- **Theni, Tamil Nadu**

**Theni Wind Farm: 99 MW | Commissioned in July 2010**

Theni, located in the Theni district in Tamil Nadu, is a 99MW wind farm which has been in operation since July of 2010.

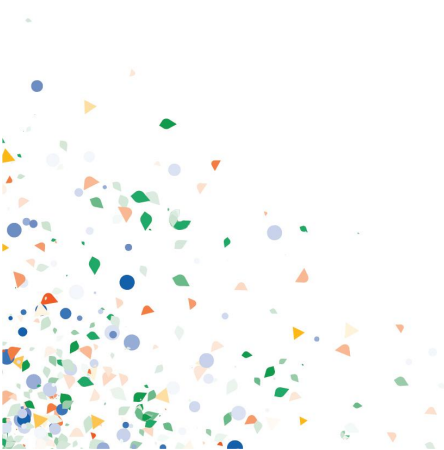
Site Name	State	Capacity	No. of Turbines	Customer	OEM	Date of Commissioning
Theni	Tamil Nadu	99 MW	60	Tamil Nadu Electricity Board	Vestas	Jul-10

- **Saundatti, Hubli, Karnataka**

**Saundatti Wind Farm: 72 MW | Commissioned in December 2010**

Saundatti, located in Belgaum district of Karnataka, is a 72MW windfarm which has been in operation since December 2010.

Site Name	State	Capacity	No. of Turbines	Customer	OEM	Date of Commissioning
Saundatti	Karnataka	72 MW	90	Bangalore Electricity Supply Company Ltd.	Wind World India Ltd	Dec-10



- **Samana, Jamnagar & Rajkot, Gujarat**  
**Samana Wind Farm: 100.8 MW | Commissioned in January 2011**

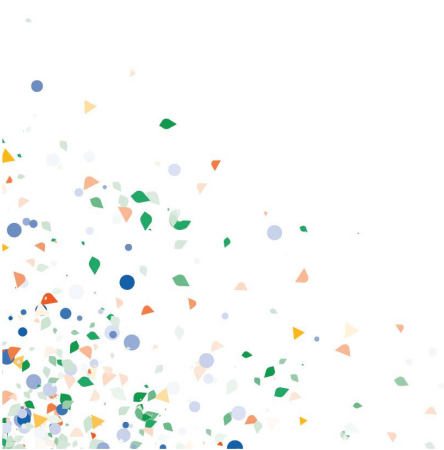
Samana located in Jamnagar and Rajkot district of Gujarat is a 100.8 MW wind farm which has been in operation since January 2011.

Site Name	State	Capacity	No. of Turbines	Customer	OEM	Date of Commissioning
Samana	Gujarat	100.8 MW	126	Gujarat Urja Vikas Nigam Ltd. & Torrent Power Limited	Wind World India Ltd	Jan-11

- **Harapanahalli, Davangere, Karnataka**  
**Hara Wind Farm: 39.6 MW | Commissioned in February 2011**

Harapanahalli, located in Bellary District of Karnataka, is a 39.6MW wind farm which has been in operation since February 2011.

Site Name	State	Capacity	No. of Turbines	Customer	OEM	Date of Commissioning
Harapanahalli	Karnataka	39.6 MW	24	Bangalore Electricity Supply Company Ltd.	Vestas	Feb-11



- **Sipla, Jaisalmer, Rajasthan**  
**Sipla Wind Farm: 50.4 MW | Commissioned in March 2013**

Sipla wind farm, located in Jaisalmer, Rajasthan is a 50.4MW wind farm which has been in operation since March 2013.

Site Name	State	Capacity	No. of Turbines	Customer	OEM	Date of Commissioning
Sipla	Rajasthan	50.4 MW	63	Jodhpur Vidyut Vitran Nigam Ltd; Ajmer Vidyut Vitran Nigam Ltd	Wind World India Ltd	Mar-13

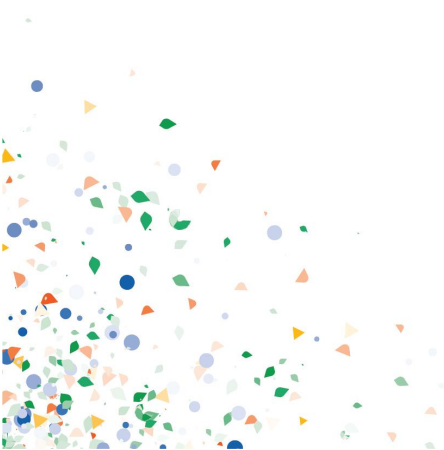
- **Andhra Lake, Pune, Maharashtra**  
**Andhra Lake Wind Farm: 106.4 MW | Commissioned in March 2012**

Andhra Lake, located in Pune district of Maharashtra, is a 106.4MW wind farm which has been in operation since March 2012.

Site Name	State	Capacity	No. of Turbines	Customer	OEM	Date of Commissioning
Andhra	Maharashtra	106.4 MW	133	Maharashtra State Electricity Distribution Company Ltd.	Wind World India Ltd	Mar-12

- **Mahidad, Rajkot, Gujarat**  
**Mahidad Wind Farm: 50.4 MW | Commissioned in March 2014**

Mahidad wind farm, located in the Surendranagar and Rajkot District, is a 50.4 MW windfarm which has been in operation since March 2014.



Site Name	State	Capacity	No. of Turbines	Customer	OEM	Date of Commissioning
Mahidad	Gujarat	50.4 MW	63	Gujarat Urja Vikas Nigam Ltd.	Wind World India Ltd	Mar-14

- **Jath, Sangli, Maharashtra**

**Jath Wind Farm: 60 MW | Commissioned in March 2014**

Jath, located in the Sangli district of Maharashtra, is a 60MW wind farm which has been in operation since March of 2014.

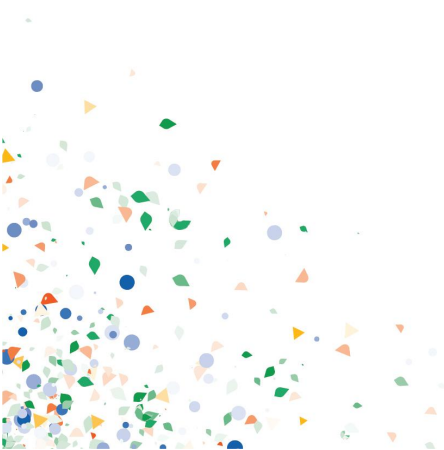
Site Name	State	Capacity	No. of Turbines	Customer	OEM	Date of Commissioning
Jath	Maharashtra	60 MW	30	Maharashtra State Electricity Distribution Company Ltd.	Siemens Gamesa	Mar-14

- **Bhakrani, Jaisalmer, Rajasthan**

**Bhakrani Wind Farm: 102.4 MW | Commissioned in July 2015**

Bhakrani wind farm located in Jaisalmer, Rajasthan is a 102.4MW wind farm which has been in operation since July 2015.

Site Name	State	Capacity	No. of Turbines	Customer	OEM	Date of Commissioning
Bhakrani	Rajasthan	102.4 MW	128	Jaipur Vidyut Vitran Nigam Ltd; Ajmer Vidyut Vitran Nigam Ltd	Wind World India Ltd	Jul-15



- **Tejuva, Jaisalmer, Rajasthan**  
**Tejuva Wind Farm: 100.8 MW | Commissioned in August 2015**

Tejuva windfarm located in Jaisalmer, Rajasthan is a 100.8MW wind farm which has been in operation since August 2015.

Site Name	State	Capacity	No. of Turbines	Customer	OEM	Date of Commissioning
Tejuva	Rajasthan	100.8 MW	48	Jodhpur Vidyut Vitran Nigam Ltd.	Suzlon	Aug-15

- **Chandgarh, Indore, Madhya Pradesh**  
**Chandgarh Wind Farm: 92 MW | Commissioned in December 2015**

Chandgarh located in the Dewas and Shajapur Districts of Madhya Pradesh is a 92MW wind farm which has been in operation since March of 2015.

Site Name	State	Capacity	No. of Turbines	Customer	OEM	Date of Commissioning
Chandgarh	Madhya Pradesh	92 MW	46	Madhya Pradesh Power Management Company Ltd.	Siemens Gamesa	Dec-15

